

# DELTA Extreme

Designed to excel in challenging environments, the Delta Extreme is exceptionally portable – the entire system can fit into a backpack and be deployed and operated by a single person.

Although small in size, the vehicle is capable of navigating through tight spaces, over objects and around obstacles due to its shape changing capabilities.

Common applications for the Delta Extreme include pipe infrastructure inspection, tank and tunnel surveillance, underwater inspection, and Search and Rescue (SAR).



## APPLICATIONS

- Search and Rescue
- Pipe and culvert inspection
- Infrastructure inspection
- Military / security surveillance
- Confined space exploration
- Navigation of rough terrain

## BENEFITS

- Portable and lightweight
- Intuitive control
- Bi-directional audio
- Small size for confined spaces
- Waterproof to 33' / 10m
- Durable and rugged



**CRYSTALCAM**  
IMAGING INC.



**ADAPTABLE ROBOTIC SOLUTIONS**

# SPECIFICATIONS

## Vehicle

**Speed** Up to 90' / 27m per minute

**Track belts** Plastic, high traction

**Chassis Material** Anodized aluminum

### Tether Cable

30m / 100' (up to 90m / 300' optional)

Multi-conductor, abrasion resistant

Polyurethane jacket

**Weight** 14lbs / 6.2kg

### Dimensions (lowered):

11"W x 17"L x 6"H (28 x 43 x 15cm)

### Dimensions (raised):

11"W x 11"L x 13.5"H (28 x 28 x 34cm)

## Camera

**Type** Colour 1/4" EX VIEW CCD

**Sensitivity** < 1.5 LUX

**Resolution** 460 TV lines

**Focus** Auto and manual

**Exposure** Auto

**Zoom** 10X optical / 4X digital

## Auxiliary Lighting

**Type** High efficiency LED

**Intensity** Variable intensity

## Operating Environment

**Temp** 0° to 50°C (32° to 122°F)

**Depth Rating** 100' / 30m

(with bidirectional audio, 33' / 10m)

## Control System

### Power

110-240 Vac and 48 Vdc

2hr Battery Pack

### Interface

Proportional joystick, membrane panel

### Control

Variable joystick

USB compatible control

## Options

Backpack

Bidirectional audio (two-way, full duplex)

Digital video recorder (DVR)

Helios® video enhancer system

Vehicle raise-position feature

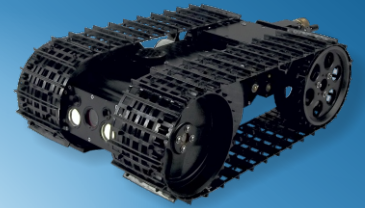
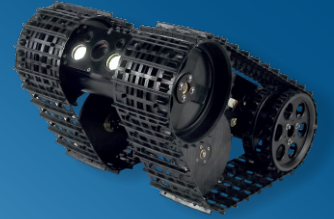
Camera tilt feedback



crystal-cam.com

The Delta Extreme is an intuitive, remotely operated robotic system designed for inspection and reconnaissance missions inside of confined spaces and hazardous environments.

Typical applications include search and rescue, duct inspection, culvert inspection and remote monitoring in nuclear power plants. Specially designed track belts provide optimal traction performance in a wide variety of environments, including sandy and muddy conditions. And, with the optional LCD monitor, recorder and battery pack, you can take the Delta Extreme robot anywhere you need to go.



**CRYSTALCAM**  
IMAGING INC.

## WHERE TO BUY



### CANADA Crystal Cam Imaging, Inc.

2231G McGarrigle Road,

Nanaimo, BC, Canada, V9S 4M5

Tel: +1 250.244.1838 • Fax: +1 250.244.6314

info@crystal-cam.com



### USA

Tel: +1 250.244.1838 • Fax: +1 250.244.6314

info@crystal-cam.com



### EUROPE Inuktun Europe, Ltd.

Unit 3 Crombie House, Grandholm Village, Bridge of Don,  
Aberdeen, Scotland AB22 8BD, UK

Tel: +44.1224.701444 • Fax: +44.1224.853860

info@inuktun-europe.com



### SOUTH ASIA Green Tech Asia Pte, Ltd.

16 Boon Lay Way, #01-43 TradeHub21,  
Singapore, 609965

Tel: +65.9383.6270 • Fax: +65.6795.4222