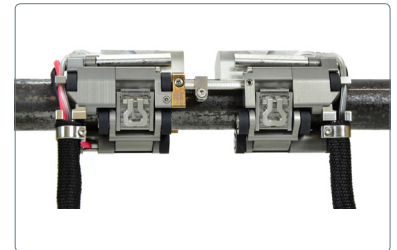
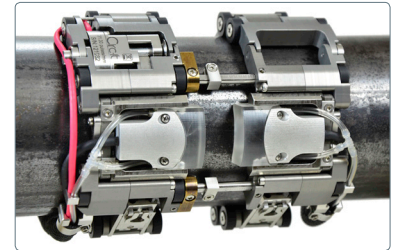
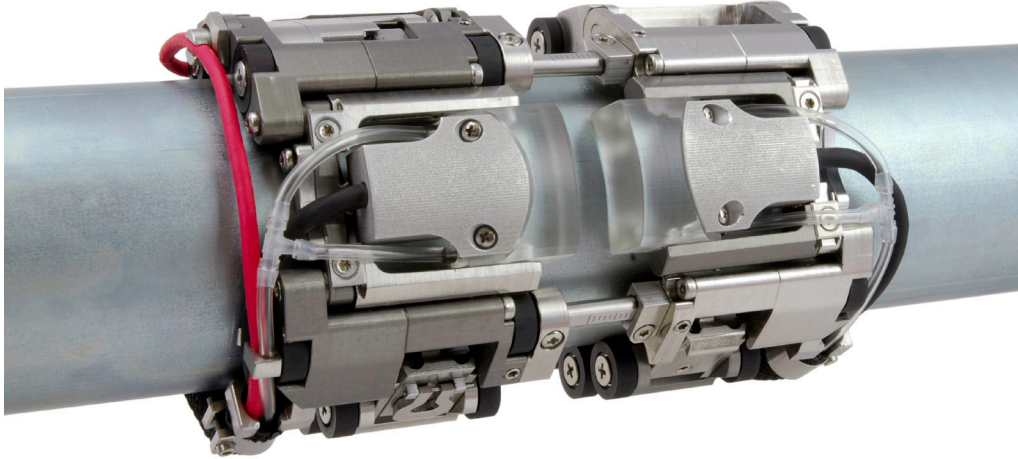




2 PROBE WELD SCANNER

LOW PROFILE SMALL DIAMETER SCANNER



The Circ-it is a manual small diameter scanner, designed to provide encoded position of probes circumferentially around piping and tubing ranging in size from 21.4mm (0.840in) to 114.3mm (4.500in). Due to the ultra low profile design the Circ-it scanner can operate in an 11mm (0.433in) radial clearance envelope. The DJG001 Circ-it kit is completely configurable for both dual and single probe scanning applications.

FEATURES:

- Low Profile Design: Radial clearance of 11mm (0.433in)
- Wheels: Durable urethane wheels provide smooth rolling and adequate traction in vertical scanning applications.
- Cable Management: The Circ-it scanner features a cable management system for irrigation lines and probe cables.
- Quick Change Links: Infinite adjustment for pipes or tubes between 21.4mm (0.840in) and 114.3mm (4.500in).
- Modular Design: Scan with both single and dual probe applications.

SPECIFICATIONS:

- Scanner Diameter Range: 21.4mm (0.840in) - 114.3mm (4.500in).
- Scanner Clearance: Minimum radial clearance = 11mm (0.433in).
- Scanner Width: Single sided scanner width = 50mm (1.980in).
- Encoder: RS422 line driver, compatible with all standard encoder inputs.
- Encoder Resolution: 32.08 pulses/mm

KIT CONTENTS:


- Scanner: 21.4mm (0.840in) - 114.3mm (4.500in) O.D. Range
- Spare Fasteners Kit
- Tubing and irrigation fittings
- Tools and accessories
- Hard Carrying Case



2 PROBE WELD SCANNER

LOW PROFILE SMALL DIAMETER SCANNER

ORDERING INFORMATION

DJG001 -  Encoder Connector Type

ENCODER CONNECTOR TYPE

CONNECTOR TYPE	COMPANY/INSTRUMENT
<i>B</i>	Olympus - OmniScan MX / Zetec - ZIRCON, TOPAZ
<i>C</i>	Olympus - Focus LT / Zetec Z-Scan
<i>D</i>	Olympus - OmniScan MX2, OmniScan SX,
<i>F</i>	TD - Focus Scan, Handy Scan, Pocket Scan
<i>G</i>	Sonotron - Isonic
<i>M</i>	GE - USM Vision
<i>U</i>	Sonatest - VEO, PRISMA

Additional encoder connector types available

ACCESSORIES



Manual Couplant Pump - 2 gal.
CMA013