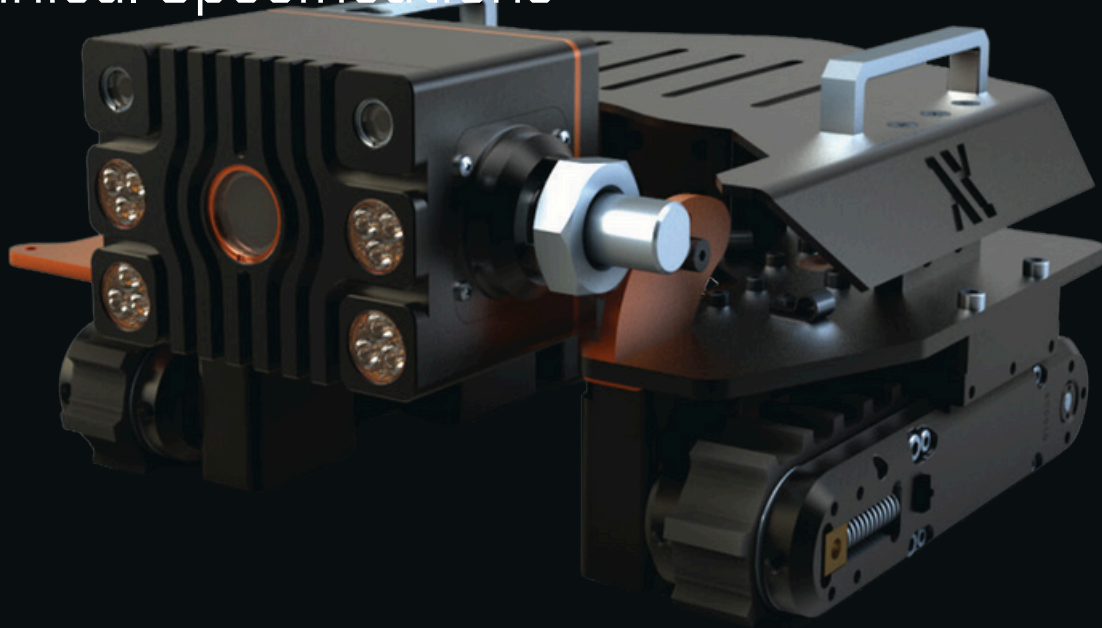


SNOWCAT C RAWLER

Technical Specifications



ENHANCEMENT SYSTEMS TO CREATE ENDLESS POSSIBILITIES

The Snowcat advantage comes from its 360 degree continuous tilt camera with powerful zoom functionality and variable intensity (spot and flood) LED lights, allowing clear capture of video and still images creating endless possibilities.

A breakthrough in remote inspection, the Snowcat enables faster, higher quality inspections that can be conducted with ease. The Snowcat magnetic crawler offers a High Definition (full 1080p HD) remote visual inspection (RVI) across a broad range of applications. Driven by the powerful Omintrax track system, Snowcat is configured to include 100 meters of tether and a portable control system with real-time recording of live video, still images and optional sensor integration. Durable construction and ease of use make it perfect for examining steel structures, both topside and subsea to reduce confined space entry and working at height.

Intuitive Control System

Nexxis designed software provides the operator with mouse and joystick controls for all vehicle functions and sensor data is automatically logged during inspection operation and can be included with the final video (or images). The operators software has been developed by Nexxis to deliver a seamless, easy-to-navigate user experience ensuring new users can quickly learn how to operate the crawler, and rapidly deploy for inspections.

INDUSTRIES

- Mining
- Utilities (Sewer / Water)
- Oil & Gas (Offshore / Onshore)
- Petrochemical
- Power Generation (Hydroelectric & Nuclear)

KEY APPLICATIONS

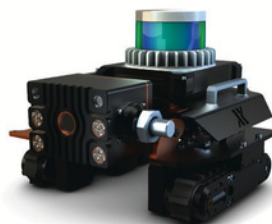
- Confined space only
- Marine
- Ship Hull
- Car Tank
- Vessel
- Storage Tank
- Wind Turbine

Unleash Versatility with the Snowcat Robotic Crawler



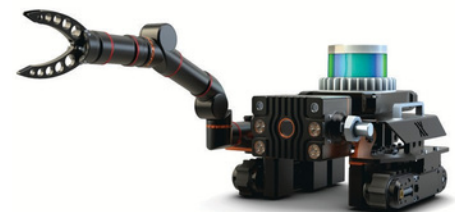
Snowcat Magnetic

For visual inspections the Snowcat in its base configuration allows for an uninterrupted inspection. Utilizing its height adjustable camera with a tilting head, this setup will perform in an array of scenarios.



3D Mapping LiDAR Option

Adding modular sensors to the Snowcat enhances its capabilities. The ARGUS LiDAR system aligns visual inspections to a 3D point cloud, allowing for comprehensive inspections with taggable points of interest.



Manipulator & NDT Option

The Snowcat's FOSAR add-on and compatibility with additional payloads make it ideal for NDT maintenance work and repair. Compatible with both OEM and third-party sensors to ensure the crawler is fit for purpose.

BUILT TO THE HIGHEST QUALITY & UNSURPASSED RELIABILITY



SNOWCAT PIPE CRAWLER SPECIFICATIONS

DEPTH RATING	60m / 200ft (150m / 492ft optional)
STANDARD TETHER LENGTH	100m / 330ft
MAXIMUM SPEED	9m / 30ft per minute
VEHICLE PAYLOAD	Up to 4.5kg / 10lb
FRONT FACING CAMERA	HD; 1080p, 10x optical zoom, 12x digital zoom, continuous tilt
OPERATING TEMPERATURE	0°-40° C / 32°-104° F
VEHICLE WEIGHT	6.2kg / 14lb
VEHICLE DIMENSIONS	282x286x193mm / 11.1x11.3x7.6in



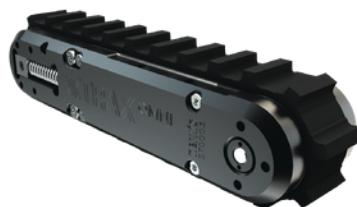
MODULARITY IN REMOTE VISUAL INSPECTION

The Snowcat Crawler is a versatile and adaptable platform that can be customized to meet the specific needs of a wide range of applications from tank and pipeline inspections to oil and gas and vessel applications.

Modularity and versatility are crucial in remote visual inspection, and the Snowcat platform provides an almost endless array plug-and-play compatibility and customization - an enormous benefit for modern, dynamic inspection requirements.



JuiceBox Controller
Easily portable, this best-in-industry solution seamlessly connects and operates a range of HD or SD remote visual inspection cameras and equipment.



XTRAX Omni
Easily portable, this best-in-industry solution seamlessly connects and operates a range of HD or SD remote visual inspection cameras and equipment.



QUBE Camera
The QUBE camera offers a 360 degree continuous tilt with full 1080p video, a 10X optical and 12X digital zoom, optional variable intensity LED lights (spot and floor) and parallel laser lines for on-screen size estimation.

HOUSTON

315 Odyssey, Suite D
Webster, TX 77598
United States
Ph: +1 (713) 258-6061

AUSTRALIA

35 Peel Road
O'Connor, WA 6163
Australia
Ph: +61 (08) 9418 4952

SINGAPORE

37 Jalan Pemimpin
#03-02 MAPEX
Singapore 577177
Ph: +65 3158 0269

[GET IN CONTACT](#)