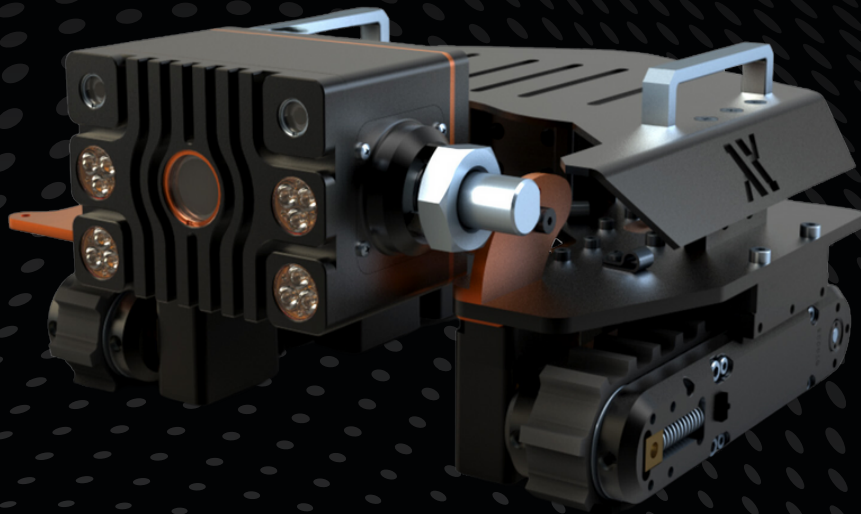


# SNOWCAT PIPE CRAWLER

Technical Specifications



**nexxis**

[NEXXIS.COM](https://www.nexxis.com)

# ENHANCEMENT SYSTEMS TO CREATE ENDLESS POSSIBILITIES

The Snowcat advantage comes from its 360 degree continuous tilt camera with powerful zoom functionality and variable intensity (spot and flood) LED lights, allowing clear capture of video and still images creating endless possibilities.

The Snowcat is a breakthrough in remote tank inspection. It enables faster, higher quality and more versatile tank inspections and this enhanced performance in turn delivers long-term cost reductions and great efficiencies. The Snowcat miniature magnetic crawler offers a unique solution for High Definition (full 1080p HD) remote visual inspection (RVI) across a broad range of applications. This powerful Omintrax based system includes 100 metres of tether and a portable control system with real time recording of live video, still images and optional sensor data. Its durable construction and ease of use make it perfect for examining steel structures, both topside and subsea to reduce confined space entry and working at height.

The camera head offers an internal continuous tilting mechanism with the HD camera module, laser lines and high intensity LED lighting (both spot and flood lamps), all in a rugged waterproof housing. Best of all – it is truly modular.

## Intuitive Control System

Nexxis designed software provides the operator with mouse and joystick controls for all vehicle functions. All sensor data is automatically logged during inspection operation and can be included with the final video (or images) using the intuitive reporting software.

## INDUSTRIES

- Mining
- Utilities (Sewer / Water)
- Oil & Gas (Offshore / Onshore)
- Petrochemical
- Power Generation (Hydroelectrical & Nuclear)

## KEY APPLICATIONS

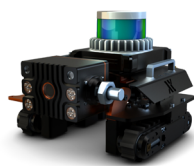
- Marine
- Ship Hull
- Car Tank
- Vessel
- Storage Tank
- Wind Turbine

## Unleash Versatility with the Snowcat Robotic Crawler



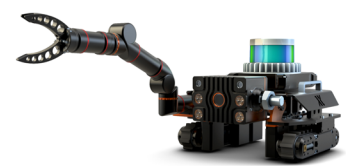
### Snowcat Magnetic

For visual inspections the Snowcat in its base configuration allows for an uninterrupted inspection. Utilising its height adjustable camera with a tilting head, this setup will perform in an array of scenarios. The chassis is then ready to be combined with any combination of additional sensors for enhanced inspections.



### 3D Mapping LiDAR Option

Adding modular sensors to the Snowcat enhances its capabilities. The ARGUS LiDAR system aligns visual inspections to a 3D point cloud, allowing for comprehensive inspections with taggable points of interest. Integrated sensors enable more complex inspections, while captured data enables tracking changes over time for proactive maintenance and repair.



### Manipulator & LiDAR Option

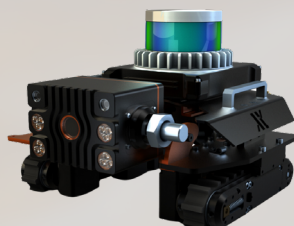
The Snowcat's FOSAR add-on and compatibility with additional payloads make it ideal for NDT maintenance work and repair. Compatible with both OEM and third-party sensors to ensure the crawler is fit for purpose. LiDAR system integration allows for precise, real-time visualisation of the arm's location, enhancing efficiency and accuracy.

# BUILT TO THE HIGHEST QUALITY & UNSURPASSED RELIABILITY



## SNOWCAT PIPE CRAWLER SPECIFICATIONS

<b>DEPTH RATING</b>	60m / 200ft (150m / 492ft optional)
<b>STANDARD TETHER LENGTH</b>	100m / 330ft
<b>MAXIMUM SPEED</b>	9m / 30ft per minute
<b>VEHICLE PAYLOAD</b>	Up to 4.5kg / 10lb
<b>FRONT FACING CAMERA</b>	HD; 1080p, 10x optical zoom, 12x digital zoom, continuous tilt
<b>OPERATING TEMPERATURE</b>	0°-40° C / 32°-104° F
<b>VEHICLE WEIGHT</b>	6.2kg / 14lb
<b>VEHICLE DIMENSIONS</b>	282x286x193mm / 11.1x11.3x7.6in
<b>STANDARD COMPONENTS</b>	2 x Xtrax Omni 1 x HD tilt camera 30m / 98ft tether JuiceBox Controller Nexxis Robotic Control Software



35 Peel Road,  
O'Connor 6163,  
Western Australia

315 Odyssey Dr.  
Suite D  
Webster, TX 77598

37 Jalan Pemimpin  
#03-02 Mapex  
Singapore, 577177

## HOUSTON

315 Odyssey, Suite D  
Webster, TX 77598  
United States

Ph: +1 (713) 258-6061

## AUSTRALIA

35 Peel Road  
O'Connor, WA 6163  
Australia

Ph: +61 (08) 9418 4952

## SINGAPORE

37 Jalan Pemimpin  
#03-02 MPAEX  
Singapore 577177

Ph: +65 3158 5772

[GET IN CONTACT](#)