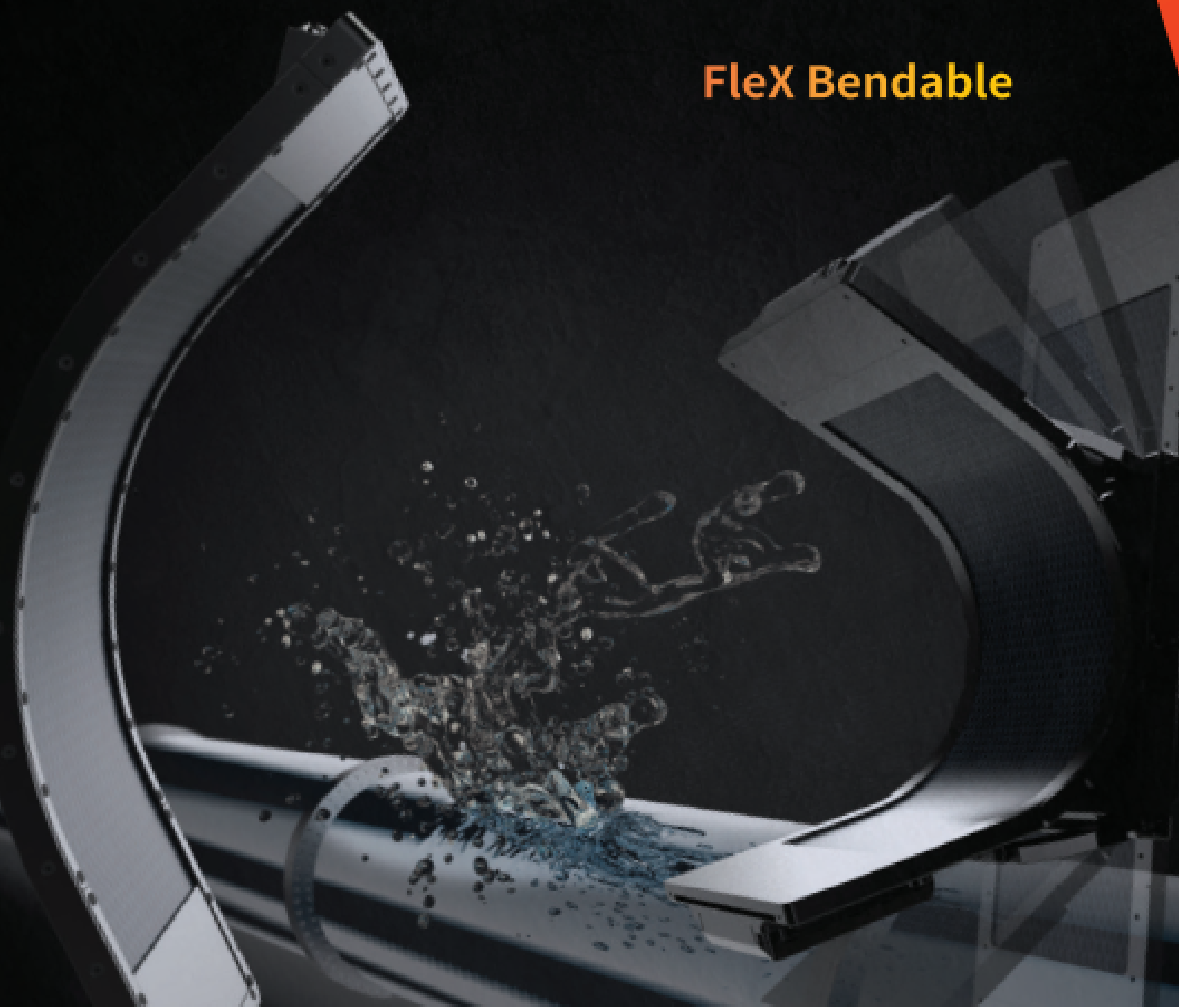


Xpress Flex Bendable DR Panel

WORLD FIRST

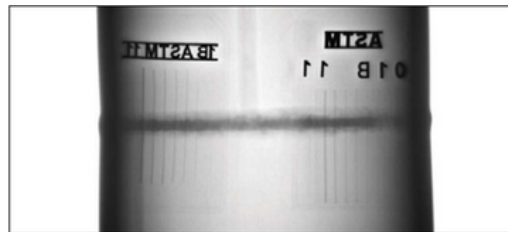
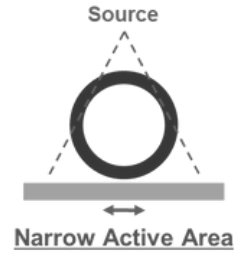
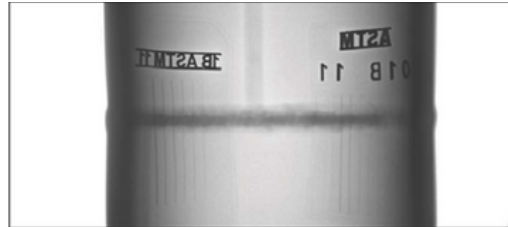
BENDABLE DIGITAL X-RAY DETECTOR

FleX Bendable

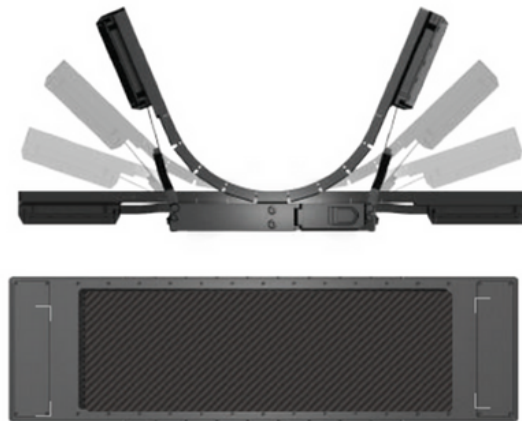


The bendable panels are fully compatible with XVu software platform

XVU



Xpress Flex Bendable DR Panel Mechanical characteristics



Specifications

Panel Technology	a-Si TFT with photodiode	Pixel Pitch(μm)	140μm
Imaging Area Size	107 x 358 mm	A/D Conversion	16-bit
Pixel Matrix (Resolution)	768 x 2560	Data Interface	1G-Enthernet WiFi(802.11n/ac)

Bending Range

Xpress Flex

| From 8"(DN200) pipe to Flat surface