

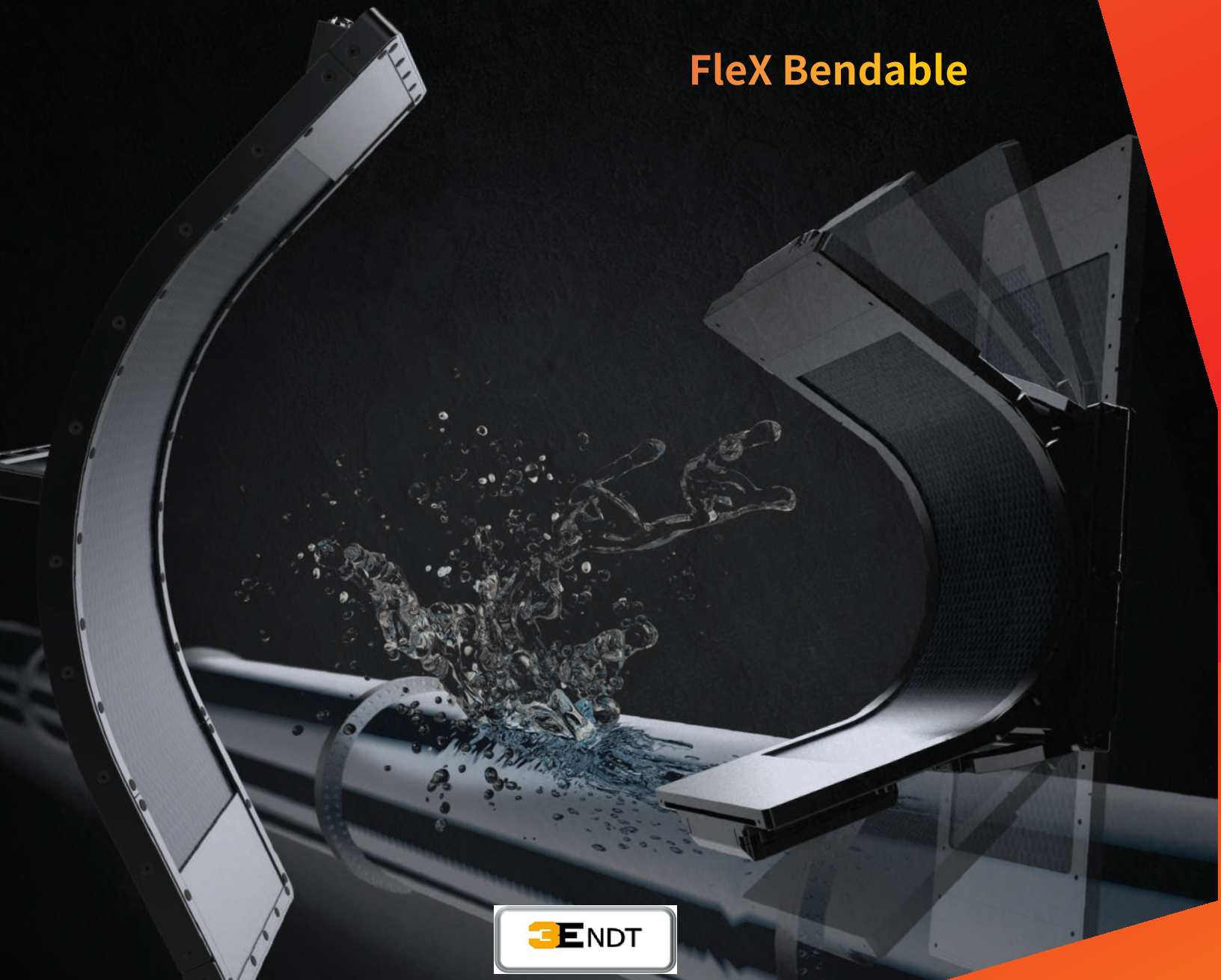


Xpress Flex Bendable DR Panel

WORLD FIRST

BENDABLE DIGITAL X-RAY DETECTOR

FleX Bendable

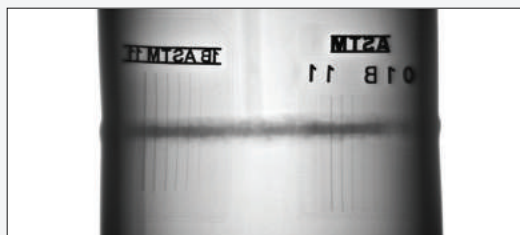


3ENDT

The bendable panels are fully compatible with XVu software platform



Flat panel



FleX series

Xpress Flex Bendable DR Panel Mechanical characteristics



Specifications

Panel Technology
Imaging Area Size
Pixel Matrix (Resolution)

a-Si TFT with photodiode
107 x 358 mm
768 x 2560

Pixel Pitch(μm)
A/D Conversion
Data Interface

140μm
16-bit
1G-Enthernet
WiFi(802.11n/ac)

Bending Range

Xpress Flex | From 8”(DN200) pipe to Flat surface

