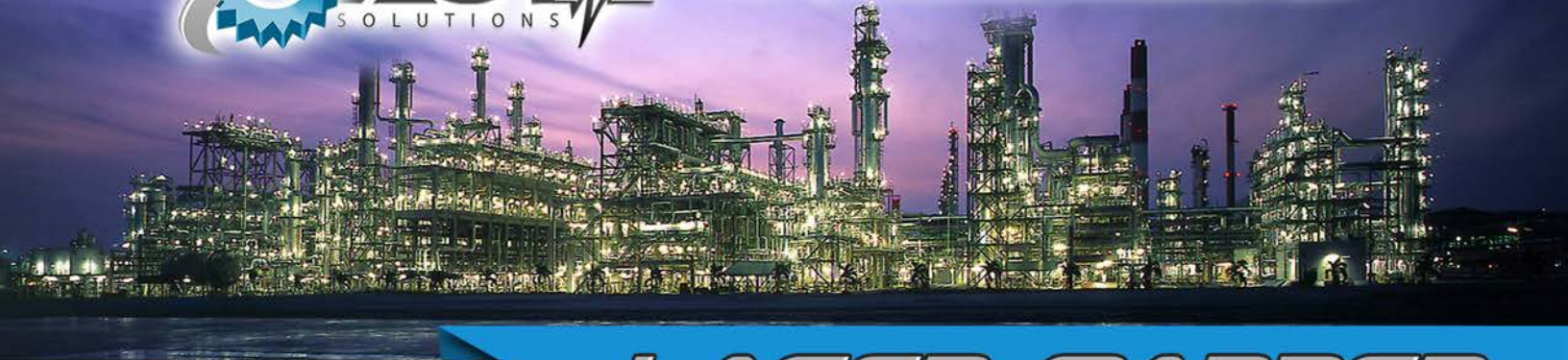




The Specialist in Advanced NDT

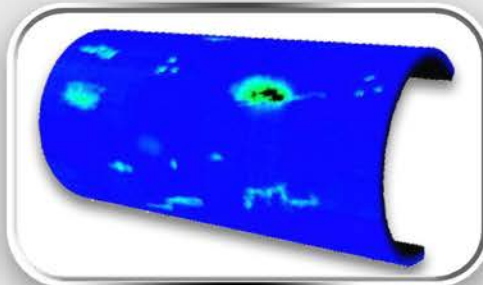


LASER MAPPER



Laser Based Solution for External Corrosion Mapping

30"/Second, +/- 0.002" Accuracy, Auto-Adjusting Laser, Affordable and Portable



Laser Mapper

The Laser Mapper makes external corrosion mapping practical when used in conjunction with our automated scanner systems. The laser beam intensity self adjusts based on variable surface conditions (dull or shiny) to obtain a depth reading without loss of data. Scanning speeds can be achieved at speeds up to 30"/Sec.

The Laser Mapper system includes a small and light weight controller box with 12vdc power supply and encoder cable. It also includes the laser sensor which mounts to our existing automated and manual scanning equipment and emits a small laser beam to the surface, then the beam distance is measured and interpolated into a thickness value using the ProScan acquisition and analysis software. The laser depth range is 1" (25mm) of displacement with accuracies within +/-0.002". Setup is simple, place the laser sensor 1" above the target surface and set the software depth measurement on an uncorroded surface to 0" and then scan away.

Features

- Fast - scan up to 30 inches per second
- Accurate - accurate to within +/- 0.002 inch
- Compatible - works with our existing line of scanners
- Affordable - costs less than an automated scanner
- Portable - laser sensor and controller weigh less than 2 pounds total
- Auto-adjusting laser beam for shiny or dull surfaces

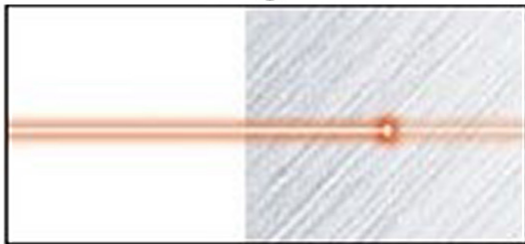
Laser Controller Specifications

- USB Type B
- Laser sensor connector: DB9 male
- Encoder feedback connector: DB9 female
- Voltage: 12vdc
- Current: 100mA

Specifications

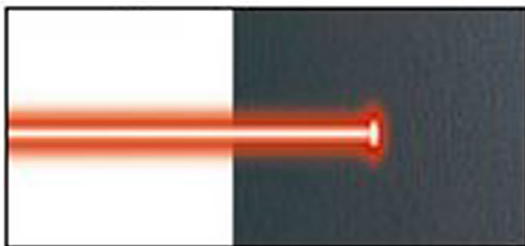
- Accurate depth measurements, +/- 0.002"
- Laser type: Red semi-conductor, wavelength 655nm,
- Laser output 220µW
- Class: FDA Class-1
- Size: 1.9" x 0.85" x1.3"
- Weight: 120grams
- Spot diameter: 200µm x 750µm (0.008" x 0.030")
- Repeatability 2µm (<0.001")
- Sensor water sealed to IP67 rating
- Temperature rating -10C to +50C (14 to 131F)
- Acquisition speed: 330µS
- Cable length: 100ft
- Sensor stand-off distance: 1" or 25mm
- Measurement range: 1" range (-5mm to 20mm)

Weaker Light



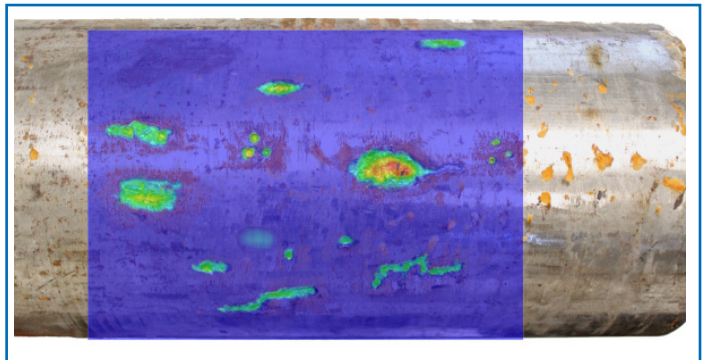
When the workpiece is bright

Stronger Light



When the workpiece is dark

Self Adjusting Laser



C-Scan Merge



Includes HD Travel Case