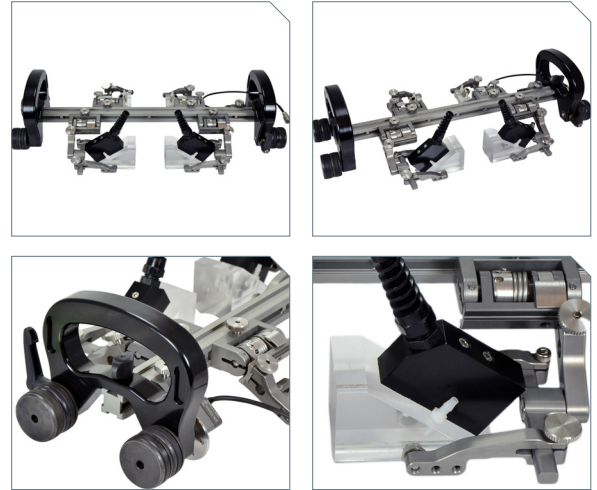
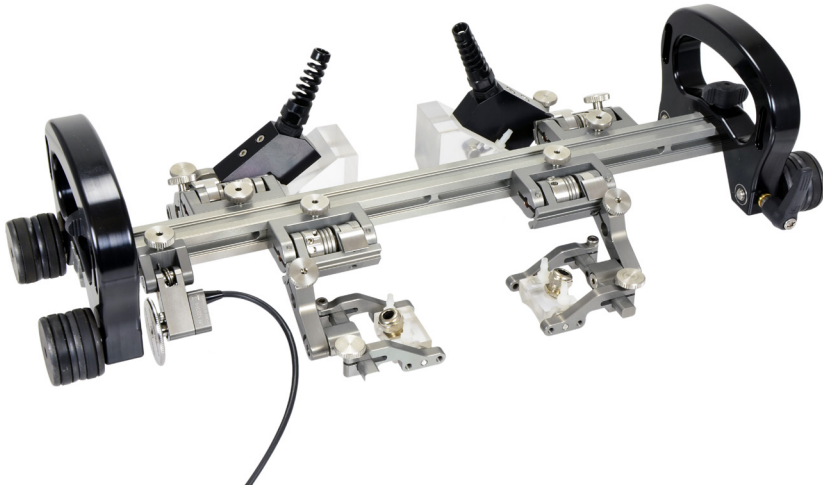




# 4 PROBE WELD SCANNER

## ONE AXIS ENCODING



The Stix – BGG003 is a manual magnetic scanner with a trailing encoder and magnetic wheels. It is designed to translate two Phased Array probes and two Phased Array probes around ferrous piping and vessels. Its simple and functional design allows for minimal adjustments between scan setups.

### FEATURES:

- Probe Holders: Adjustable to accommodate multiple probe and wedge combinations.
- Brake system: Locks scanner in required position.
- Magnetic Wheels: Coated with urethane for smooth rolling. Stackable to allow for increased magnetism.
- Encoder: Integrated spring loaded encoder is compatible with all standard instruments.

### SPECIFICATIONS:

- Pipe Range: 4" – Flat
- Encoder Resolution: 9.05 steps/mm (5V DC TTL encoder compatible with all major UT instruments)
- Probe Holding Capacity: 2 Phased Array wedges,
- Umbilical Length: 5m
- Inspection Surface: Ferrous materials

### KIT CONTENTS:

- Stix Frame with 40cm (15.7in) Frame Bar
- 4 Additional magnetic wheels
- 2 Slip Joint Phased Array probe holders (Adjustable wedge size)
- 2 Slip Joint TOFD probe holders (Adjustable wedge size)
- 2 Long probe holder arm sets
- Probe holder spare parts kit
- Irrigation kit
- 3mm hex tool
- Rugged carrying case

TOFD PROBE HOLDER		
Arm Style	Width (W)	Length (L)
Short	0.513" (13.0mm) - 1.772" (45.0mm)	1.450" (36.8mm)

PHASED ARRAY PROBE HOLDER		
Arm Style	Width (W)	Length (L)
Standard	0.513" (13.0mm) - 2.266" (57.6mm)	1.910" (48.5mm)
Short	0.513" (13.0mm) - 2.165" (55.0mm)	2.570" (65.3mm)



Jireh Industries Ltd.  
 53158 Range Road 224  
 Ardrossan, Alberta  
 Canada T8E 2K4  
 ph: 780-922-4534

© 2013 Jireh Industries. All specifications are subject to change without notice. All brands are trademarks or registered trademarks of their respective owners and third party entities.

info@jireh-industries.com

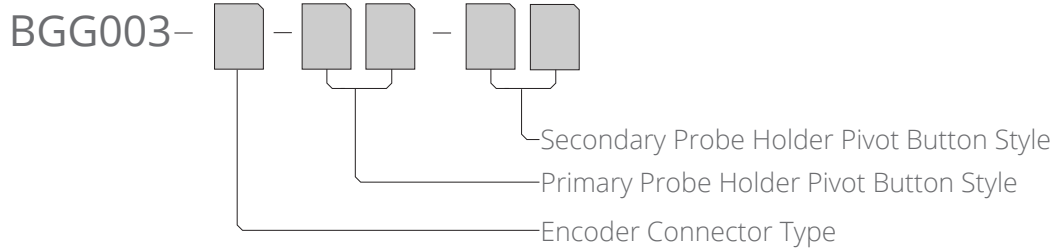
www.jireh-industries.com



# 4 PROBE WELD SCANNER

## ONE AXIS ENCODING

### ORDERING INFORMATION



### ENCODER CONNECTOR TYPE

CONNECTOR TYPE	COMPANY/INSTRUMENT
<i>B</i>	Olympus - OmniScan MX / Zetec - ZIRCON, TOPAZ
<i>C</i>	Olympus - Focus LT / Zetec Z-Scan
<i>D</i>	Olympus - OmniScan MX2, OmniScan SX,
<i>F</i>	TD - Focus Scan, Handy Scan, Pocket Scan
<i>G</i>	Sonotron - Isonic
<i>M</i>	GE - USM Vision
<i>U</i>	Sonatest - VEO, PRISMA

Additional encoder connector types available

### PIVOT BUTTON STYLE

BUTTON STYLE		PIVOT HOLE SIZE	WEDGE TYPE
01		8.0mm (0.315")	Olympus PA
02		5.0mm (0.197")	Olympus TOFD
03		2.7mm (0.106")	Sonatest DAAH PA
04		9.5mm (0.375")	-
06		3.0mm (0.118")	-
07		2.3mm (0.090")	-
08		Conical Head	-
09		5mm (0.197") Internal	Zetec PA/TOFD

Additional encoder connector types available

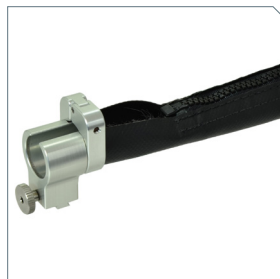
### ACCESSORIES



Manual Couplant Pump - 2 gal.  
CMA013



Manual Couplant Pump - 3 gal.  
CMA014



Zipper Tube Cable Mgmt. Kit  
CES044-04.5