



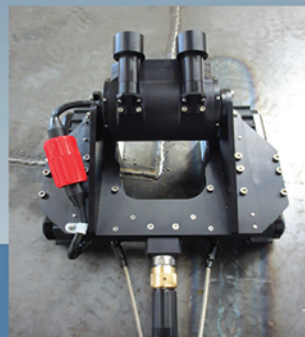
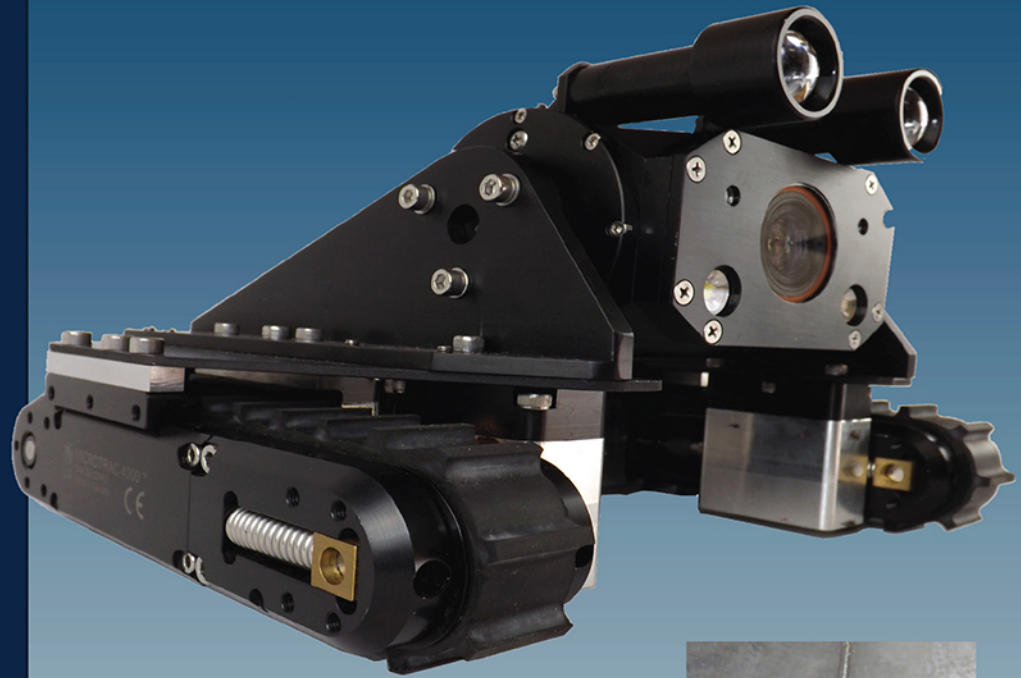
INUKTUN
 TRANSFORM THE FUTURE

MaggHD™



Inuktun's MaggHD™ offers a 360 degree continuous tilt camera with full 1080p video, a 10X optical and 12X digital zoom, optional variable intensity LED lights (spot and flood) and parallel laser lines for on-screen size estimation. Utilizing Inuktun's ICON and InPRO PC control system, the crawler records video at full resolution and allows for still image capture, on-screen annotation and sensor integration.

When part of a complete tank inspection package, the camera head can be removed from the crawler and attached to an extendible pole for quick evaluation of nearby hazards or confined spaces. The crawler system can be adapted to incorporate the UT thickness scanning ability of the MaggUT™ crawler, or you can take advantage of our Multi-Mission Modular (IM3) technology by simply bringing your inspection requirements to us — and we'll add them to the system!



SPECIFICATIONS

VEHICLE

Crawler Tracks	2x 4000 series Microtracs™
Track Material	Aluminum
Chassis	Flat, aluminum
Magnet	Rare earth Neodymium array (N52)
Adhesion Force	10 Kg / 22 lb (on 10mm / 3/8 in steel)
Payload Capacity	4.5 Kg / 10 lb
Dimensions (L x W x H)	245 mm x 275 mm x 128 mm 9 3/8 in x 10 7/8 in x 5 in
Weight	6.2 kg / 14 lb
Depth Rating	60 m / 200 ft

TETHER

Maximum Length	30 m / 100 ft with option for longer lengths
----------------	--

CAMERA

Resolution	1080p
Viewing Angle (in air)	67 deg (wide) to 7.6 deg (tele)
Min. Illumination	1.4 lux
Lighting	2 x LED flood lights
Options	Aux LED spot or flood lights Parallel laser lines

CONTROL SYSTEM

Power	115/230 VAC 50/60 Hz
Operator Controls	Joystick or GUI
Controller Type	Portable interface box for laptop or PC control

APPLICATIONS AND BENEFITS

Oil Rigs

- Significant cost advantage over manual inspection
- Pontoon, column and riser inspections

Tanks and Vessels

- No requirement for human entry - no risk to life
- Inspect vessels in hazardous and confined accessibility conditions
- In-service tank inspection

Infrastructure

- Inspection of steel framework on buildings, bridges and support structures
- Visual and custom sensor inspection in areas not accessible by humans
- Inspect high steel walls and internal spaces

Pipelines

- Internal and external examination
- Pipe support inspection

OPERATING ENVIRONMENT

Temperature	0-40 °C / 32-104 °F
-------------	---------------------

MODULAR MOBILE ROBOTIC
CRAWLER VEHICLES

INDUSTRIAL WATERPROOF
CAMERA SYSTEMS